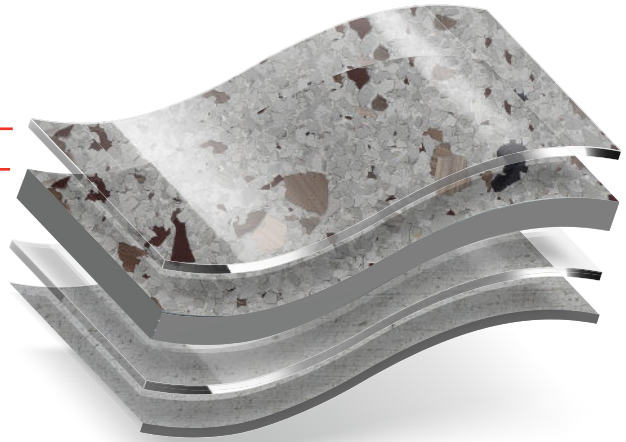


8370 TerraCrown® Coat	...	10 Ft ² /Gal
8373 TerraCrown® MVB	...	100 Ft ² /Gal
8371 TerraCrown® Primer	...	200 Ft ² /Gal
Prepared Concrete	...	CSP 2-4



OPTIONAL COMPONENTS

- **Moisture Mitigation Primer :**
8303 CrownShield® Clear 100 ft²/gal @ 16 mils
- **Waterproofing & Crack Suppression Membrane :**
8372 TerraCrown™ Clear 40 ft²/gal @ 40 mils

*For complete details refer to each optional components Technical Data Sheet (TDS).

MECHANICAL PROPERTIES

For complete details refer to each components Technical Data Sheet (TDS)

CHEMICAL RESISTANCE

Refer to CrownTech Chemical Resistance Guideline Technical Bulletin No. 9

SYSTEM DESCRIPTION

TerraCrown® Terrazzo is a pigmented two-component epoxy binder that is used to create the most decorative polymer floors in the construction industry. It is installed at a normal thickness of 375 mils (3/8"). The thickness of the installation affects the aggregate sizes. The most common chips are marble, which naturally occurs in different colors and different MOHs hardness. Recycled glass adds both color, mirrored glass creates a three-dimensional depth, while Mother of Pearl, other aggregates and pigment colors are incorporated to create unique "one of a kind" looks. It is VOC Compliant in all states and provinces in North America. Meets: 1. NTMA (National Terrazzo and Mosaic Association) 2. TTMAC (Terrazzo, Tile and Marble Association of Canada).

TYPICAL USES

- Airport, Bus, Train Terminals
- Retail Spaces & Mall Common Areas
- School & Universities
- High End Designer Floors
- Hotel Lobbies & Office
- Hospital and Health Care Facility Floors
- Pharmaceutical Floors

BENEFITS

- Complies with USDA, FDA, FSMA. See Crown Polymers Technical Bulletin: 3 Food and Beverage Compliance.
- Slip Resistance (ADA) See Crown Polymers Technical Bulletin: 4 Coefficient of Friction.
- LEED requirements. See Crown Polymers Technical Bulletin: 5 LEED information
- Cures to an inert finish. See Crown Polymers Technical Bulletin: 2 VOC Compliance

COLORS



Federal Standard 595C & Custom Colors

DISCLAIMER

All guidelines, recommendations, statements, and technical data contained herein are based on information and tests we believe to be reliable and correct, but accuracy and completeness of said tests are not guaranteed and are not to be construed as a warranty, either expressed or implied. It is the user's responsibility to satisfy himself, by his own information and test, to determine suitability of the product for his own intended use, application and job situation and user assumes all risk and liability resulting from his use of the product. We do not suggest or guarantee that any product limitations are the only ones which may exist. Neither Seller nor Manufacturer shall be liable to the buyer or any third person for any injury, loss or damage directly or indirectly resulting from use of, or inability to use, the products. Recommendations or statements, whether in writing or oral, other than those contained herein shall not be binding upon the Manufacturer, unless in writing and signed by an authorized corporate officer of Manufacturer. Technical and application information is provided for the purpose of establishing a general profile of the material and proper application procedures. Test performance results were obtained in a controlled environment and Manufacturer makes no claim that these tests or any other tests accurately represent all environments. Manufacturer is not responsible for typographical errors. [Scan QR code for full Disclaimer and Limited Warranty information](#)

