



TERRACROWN®

Epoxy-Based Terrazzo Flooring System



ABOUT

WHAT IS TERRAZZO?

Terrazzo, derived from the Italian word for “terrace,” boasts a rich history spanning over five centuries, beginning in 15th-century Venice. After completing marble projects, workers would repurpose the leftover marble fragments by embedding them in clay and grinding them flat to create smooth, walkable floors. Initially, the vibrant colors of terrazzo would only become apparent when wet, until workers discovered that goat milk could be used as a finish to enhance its true colors and shine. A significant advancement came in 1924 with the introduction of electric grinding equipment, which improved upon the traditional Galera tool, enabling smoother finishes. Shortly thereafter, the industry was transformed by the use of white Portland cement, allowing terrazzo to be dyed in a myriad of colors and vastly expanding its design possibilities.

Today, terrazzo primarily utilizes epoxy-based installations, which offer numerous benefits, such as enhanced design color flexibility, faster application rates, lighter weight, superior strength, and extended life cycles. Our TerraCrown® Epoxy Terrazzo System exemplifies these advancements, ensuring durability and cost-effective flooring solutions.

In addition, we offer a comprehensive support package that includes sample programs, technical assistance, and continuing education presentations, empowering our clients with the knowledge to maximize the benefits of epoxy terrazzo.

DURABLE

The resin-based TerraCrown® Epoxy Terrazzo System is long-lasting and stronger than other flooring systems. It can often outlast the life of the entire building. It is perfect for high-traffic areas and can withstand wear and tear for years to come. The long-life cycle of Epoxy Terrazzo will significantly reduce the carbon footprint during the floor’s life.

CLEAN

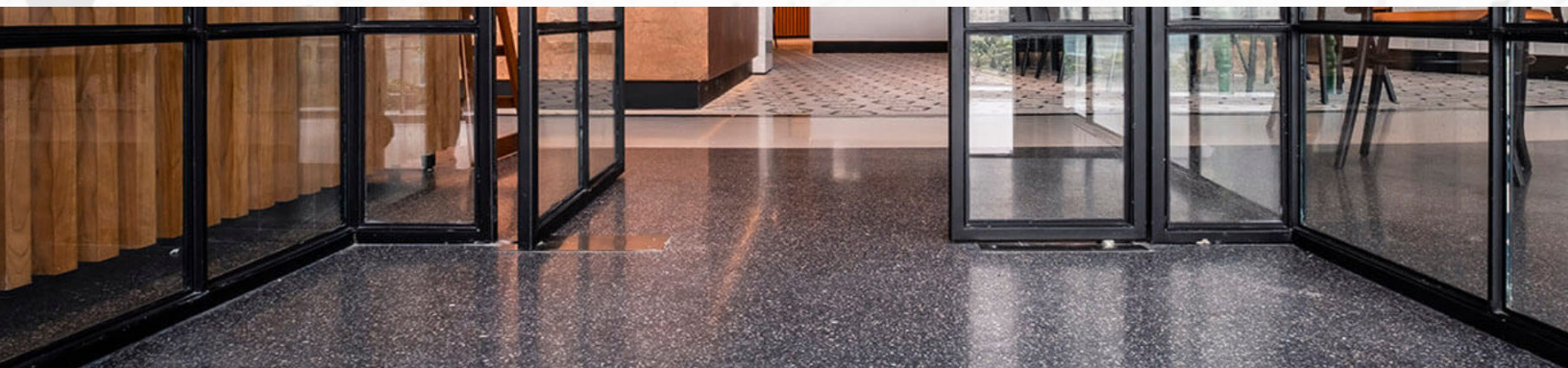
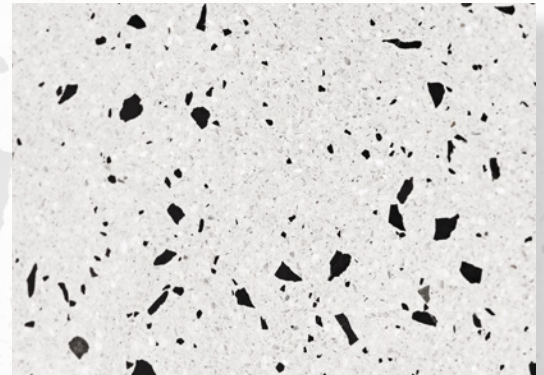
TerraCrown® Epoxy Terrazzo System is resistant to water, stains, mold, mildew, and unwanted odors. The system prevents the growth and spread of bacteria and other pathogens. Epoxy Terrazzo System keeps floors sanitary and easy to clean with low-maintenance costs.

SUSTAINABLE

TerraCrown® Epoxy Terrazzo System requires no harsh chemicals to clean. The system is crafted from pre or post-consumer recycled waste materials without compromising design or durability. It merges sustainability and beauty. The TerraCrown® Epoxy Terrazzo System is the only flooring product that can be rejuvenated, restored, and repolished.

DESIGN

TerraCrown® is versatile and flexible in design choices. Our Epoxy Terrazzo System complements any style or design concept; minimal, neutral, seamless, and modern. A great design solution for all commercial environments.



TerraCrown® Epoxy Terrazzo System

8370 TerraCrown® Thin-set Epoxy Binder

Thin-set Epoxy Terrazzo incorporates marble, granite, glass chips, oyster, shell, and other aggregates in an epoxy binder and is the surface design layer of the system. 8370 TerraCrown® Thin-set Epoxy Binder is a pigmented, two-component epoxy binder used to create the most decorative and distinct flooring in the construction industry. In addition, pigmented colors can be incorporated to create a unique, “one of a kind” look.

8371 TerraCrown® High-Performance Primer

The use of primer improves and strengthens substrates bonding between the properly prepped substrates to the Epoxy Terrazzo Overlay. When 8371 TerraCrown® High-Performance Primer is combined with 8373 TerraCrown® Moisture Vapor Barrier creates a moisture-mitigation primer. 8371 is a 100% solids, two-component epoxy primer for TerraCrown® Thin-set Epoxy.

8372 TerraCrown® Flex Membrane

This membrane layer is a highly engineered, flexible layer between primer and Thin-set Epoxy Terrazzo overlay that absorbs vibrations and disperses impact force while functioning as an isolation coat to mitigate concrete stress and cracks from transferring to the epoxy floor system. 8372 TerraCrown® Flex Membrane is a 100% solids, two-component, epoxy-based flexible membrane designed for TerraCrown® Thin-set Epoxy.

8373 TerraCrown® Moisture Vapor Barrier (MVB)

8373 TerraCrown® MVB may be used as a single primer coat suitable for various types of concrete. The low-viscosity formula promotes deeper concrete penetration for superior substrate adhesion and generates a higher propensity for sealing and blocking moisture drive than standard epoxy products.

8303 CrownShield® Dual Moisture Vapor Barrier (MVB) & Primer

8303 CrownShield® Dual Moisture Vapor Barrier (MVB) & Primer can be used as a single primer coat negative side moisture vapor barrier suitable for various types of concrete. The low viscosity formula not only promotes deeper concrete penetration for superior substrate adhesion but also generates a higher propensity for sealing and blocking moisture drive than standard epoxy flooring products.



Transportation



Healthcare



Retail



Hospitality



Education



Corporate

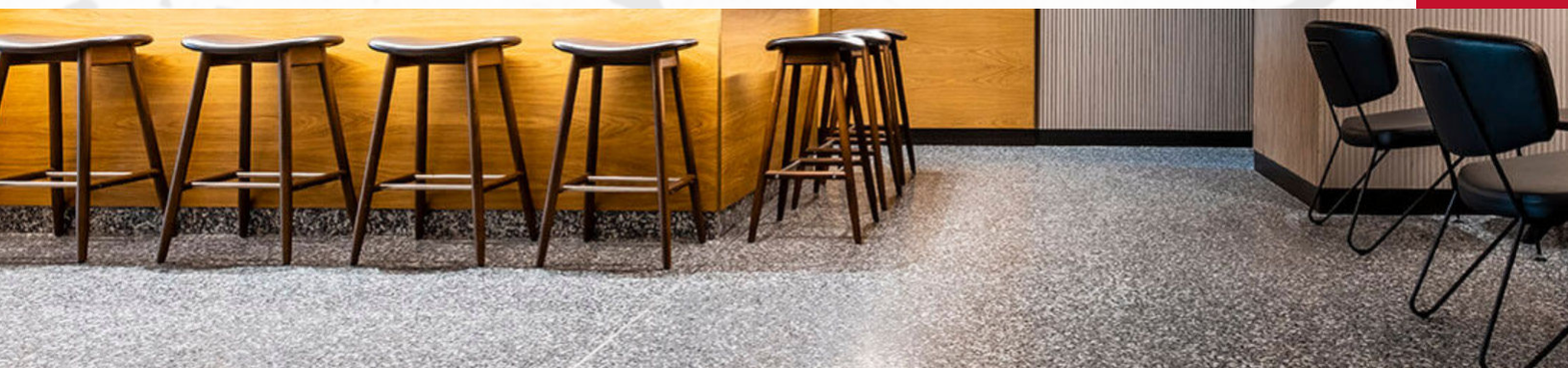


Government

NTMA (National Terrazzo & Mosaic Association) Approved Supplier, TTMAC (Terrazzo, Tile & Marble Association of Canada), USDA, FDA, Food and Safety Modernization Act.

847.659.0300

BY CROWN POLYMERS





30+ YEARS OF INDUSTRY EXPERIENCE AND MORE THAN 1,000,000 SQ. FT. OF MANUFACTURING SPACE

GET IN TOUCH

2051 Reliance Pkwy
Bedford, TX 76021

13827 Carmenita Road Suite 200,
Santa Fe Springs CA 90670

11111 Kiley Dr, Huntley IL, 60142

Telephone: (847) 659-0300

Website: crownpolymers.com

Email: info@crownpolymers.com



With over 30+ years of industry experience, Crown Polymers is one of the nation's leading manufacturers of high-performance epoxy and urethane-based floor coating products and concrete repair systems for commercial, institutional and industrial floors. Crown's production capabilities span across California, Texas, and Illinois with over 1,000,000 square feet of manufacturing space.