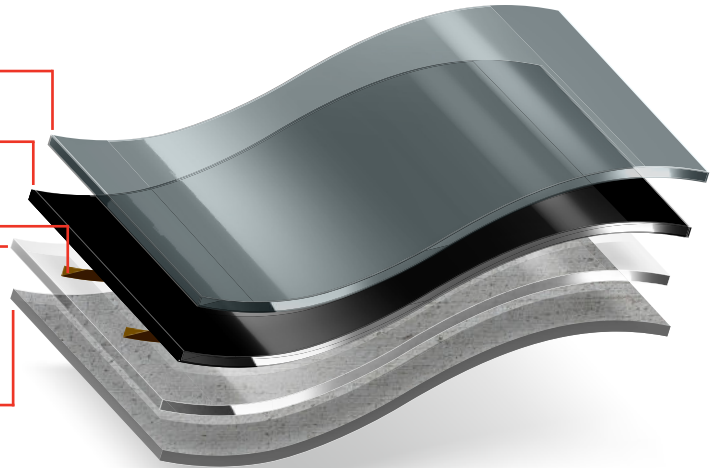


8602 StaticShield Build Coat	...	100 Ft ² /Gal
8601 Conductive Primer	...	200 Ft ² /Gal
Conductive Copper Strip	...	As specified
320 CrownShield Insulation Primer	...	160 Ft ² /Gal
Prepared Concrete	...	CSP 2-4



SYSTEM DESCRIPTION

ESD Conductive System meets ANSI/ESD 2020 and ANSI/ESD STM7.1 Standards and is placed at a nominal thickness of 34 mils. It is electrically active within the resistance range of Static Dissipative 25 thousand to 1 million ohms (2.5E4-1E6) resistance range as tested per ANSI/ESD Association ANSI/ESD STM 7.1. It is also available with an optional fluid proofing and crack suppression membrane. It is VOC Compliant in all states and provinces in North America.

TYPICAL USES

- Aerospace & Avionics
- Bio Technology & Research
- EV Battery Production
- Flammable & Explosive Areas
- Semi-Conductor Production
- Automotive Maintenance & Repair
- Computer & Data Housing
- Chemical Processing & Storage
- Medical Equipment

BENEFITS

- Complies with USDA, FDA, FSMA. See Crown Polymers Technical Bulletin: 3 Food and Beverage Compliance.
- LEED requirements. See Crown Polymers Technical Bulletin: 5 LEED information
- Cures to an inert finish. See Crown Polymers Technical Bulletin: 2 VOC Compliance

COLORS



Light Grey

Med Grey

Dark Grey

OPTIONAL COMPONENTS

- **Moisture Mitigation Primer :**
8303 CrownShield™ Clear 100 ft²/gal @ 16 mils
- **Waterproofing & Crack Suppression Membrane :**
8502 CrownFlex Clear 40 ft²/gal @ 40 mils
- **Cove Binder :**
8503 CrownFlex Thixotropic Epoxy 35 lf/gal @ 6"

*For complete details refer to each optional components Technical Data Sheet (TDS).

MECHANICAL PROPERTIES

For complete details refer to each components Technical Data Sheet (TDS)

CHEMICAL RESISTANCE

Refer to CrownTech Chemical Resistance Guideline Technical Bulletin No. 9

PERSONAL PROTECTIVE EQUIPMENT

Personal Protective Equipment
Jiffy Mixing Paddle
Slow Speed Drill
18"x3/8" Nap Roller Cover
8-12 Mil Notched Squeegee
4" Chip Brush
Spike Shoes

SURFACE DIAGNOSTICS

Concrete must be structurally sound and free of all contaminants and bond breakers. Test concrete compressive strength using a Schmidt or Rebound Hammer to ensure substrate has compressive strength of 3500 psi or higher.

Perform a pH test using concrete pH test strips or meter to ensure substrate pH is between 9-12.

Perform Moisture Test using either Calcium Chloride per ASTM F1869 or In-Situ Relative Humidity Probe per ASTM F2170 to ensure substrate has Moisture Vapor Emission Rate of 3 lbs or less and Relative Humidity of 80% or less. See CrownTech Bulletin 6: Moisture Mitigation Negative Side Moisture Barrier

SURFACE PREPARATION

Use Mohs scratch test to determine concrete hardness for proper diamond bond selection.

Concrete should be mechanically profiled and prepared to produce a Concrete Surface Profile (CSP) level between #2 & #4 per ICRI Guideline no. 310.2R. See CrownTech Bulletin 1: Concrete Surface Preparation.

All perimeter areas of coating termination shall be masked for protection. Saw cut and key-in all termination points.

SURFACE REPAIR

All depressions, divots and cracks should be profiled and free of dust and contaminants. Repair surface imperfections to reduce the ability to see the defect through the coating.

Honor all dynamic (moving) joints, static joints may be filled, use dynamic joints as initiation and termination points during application process where needed.

TEMPERATURE EVALUATION

Ambient and substrate temps should be above 50°F and a minimum of 5°F above Dew Point.

Product temps should be between 70-80°F.
Relative Humidity should not exceed 80%. See CrownTech Bulletin 7: Temperature & Relative Humidity

REFER TO SAFETY DATA SHEETS (SDS) FOR SAFETY PRECAUTIONS.

SAFETY PRECAUTIONS MUST BE FOLLOWED DURING STORAGE, HANDLING AND USE.

PERSONAL PROTECTIVE EQUIPMENT (PPE)

SHALL BE WORN AT ALL TIMES INCLUDING BUT NOT LIMITED TO LONG SLEEVE SHIRTS OR DISPOSABLE ARM SLEEVES, SAFETY GLASSES, DISPOSABLE NITRILE GLOVES, AND PROPERLY FITTED NIOSH RESPIRATORS

ALL SOURCES OF IGNITION SHOULD BE TURNED OFF AND ENVIRONMENT SHOULD HAVE PROPER AND ADEQUATE VENTILATION DURING APPLICATION AND CURING PROCESS

MIXING AREA SHOULD BE PLACED ON OR IN CLOSE PROXIMITY TO PROJECT. AREA SHOULD BE SECURELY COVERED WITH PLASTIC, CARDBOARD OR TARP. STAGE MATERIALS, TOOLS AND CLEANING SUPPLIES IN MIXING AREA PRIOR TO APPLICATION PROCESS.

Do not mix more material than can be applied in 20 minutes

320 MIXING PROCEDURE

1 Pre-Mix A-Component in its respective container using Jiffy mixer and drill at slow speeds for 30 seconds.

2 Pre-Mix B-Component in its respective container using clean Jiffy mixer and drill at slow speeds for 30 seconds or until thoroughly homogeneous.

3 Transfer B-component and A-component at a mix rate of 2A:1B by volume into a clean 5-gal bucket and mix for 2-3 minutes being sure to scrape sides of the bucket with a stir stick ensuring both components are thoroughly blended

320 PRIMER COVERAGE RATE

160 Ft² / Gal @ 10 mils wet film

320 PRIMER WORKING TIME

20 Minutes @ 75°F

320 APPLICATION PROCEDURE

1 Cut-in stem walls using a 4" chip brush. Do not work edges more than 10 minutes ahead of main body of the floor.

Epoxy sets quicker in mass, material should not be left in bucket for extended periods of time

2 Pour a band of mixed material across the surface roughly 4-6" wide. Use 8-12 mil notched squeegee to gauge material across surface.

- Maintain wet edge
- Do not allow more than 10 mins ahead of next mixed batch.

• Always pour next mixed batch onto wet edge.

Back roll the surface with 18" x 3/8" nap roller by walking into the wet material wearing spike shoes and roll the surface wall to wall with overlap perpendicular to your first pass

- Do not overwork material

✓ Allow coating to dry 6-8 hrs @ 75°F. Once Primer is dry apply grounding strips per specification.

8601 MIXING

1 Pre-mix A-Component and mix using Jiffy mixer and drill at slow speeds for 30 seconds until pigment is uniform.

2 Add B-Component to the A-Component and mix for 2 minutes.

3 Add 1 Quart clean water and mix again for 2 minutes being sure to scrape sides of the bucket with a stir stick ensuring both components are thoroughly blended

COVERAGE RATE

Primer: 200 Ft² / Gal @ 8 mils

WORKING TIME

20-30 Minutes @ 75°F

APPLICATION STEPS

1 Cut-in stem walls using a 4" chip brush. Do not work edges more than 10 minutes ahead of main body of the floor.

2 Pour a band of mixed material across the surface roughly 4-6" wide. Use 8-12 mil notched squeegee to gauge material across surface depending on desired application

3 Back roll the surface with 18" x 3/8" nap roller by walking into the wet material wearing spike shoes and roll the surface wall to wall with overlap perpendicular to your first pass

✓ Allow coating to dry.
Apply subsequent Coats: 12-24 Hours

8602 MIXING

1 Premix A component for 30 seconds and add pigment and mix for 1 minute or until mixture is homogenous

2 Add B component and mix at slow speed for 2 minutes or until thoroughly homogeneous being sure to scrape sides of bucket to ensure all material is thoroughly blended.

COVERAGE RATE

Build Coat: 100 Ft² / Gal @ 16 mils

WORKING TIME

20-30 Minutes @ 75°F

APPLICATION STEPS

1 Cut-in stem walls using a 4" chip brush. Do not work edges more than 10 minutes ahead of main body of the floor.

2 Pour a band of mixed material across the surface roughly 4-6" wide. Use 15-20 mil notched squeegee to gauge material across surface

3 Back roll the surface with 18" x 3/8" nap roller by walking into the wet material wearing spike shoes and roll the surface wall to wall with overlap perpendicular to your first pass



Allow coating to dry

Light Foot Traffic: 24 Hours

Heavy Foot Traffic: 48 Hours

Equipment Traffic: 72 Hours

SLIP RESISTANCE

Skid-Resistance – Field (in situ) Wet Dynamic Coefficient of Friction (DCOF), ANSI A326.3. See Crown Polymers Technical Bulletin: 4 Coefficient of Friction.

CLEAN-UP

Clean-up mixing station, tools, and equipment as required. Use acetone, a VOC exempt solvent, for cleaning up. Observe all legal, and health, and safety precautions when handling or storing solvents and materials, particularly in confined spaces. Make sure the working areas are well ventilated at all times during placement and curing time.

DISPOSAL

Dispose of empty packaging and other waste in accordance with federal, state, provinces and local regulations.

MAINTENANCE

Inspect the installed floor by spot cleaning and spot repairing the damaged or cracked areas. To prolong life of the flooring system, a daily maintenance program is highly recommended to ensure the floor is safe for its intended purposes. See Crown Polymers Technical Bulletin: 8 Care and Maintenance.

TECHNICAL SUPPORT

For questions, contact a Crown Polymers Representative. Additional Support Documents are available from Crown Polymers, including brochures, application guidelines, videos and more. Visit Crownpolymers.com or contact Crown for additional resources

DISCLAIMER

All guidelines, recommendations, statements, and technical data contained herein are based on information and tests we believe to be reliable and correct, but accuracy and completeness of said tests are not guaranteed and are not to be construed as a warranty, either expressed or implied. It is the user's responsibility to satisfy himself, by his own information and test, to determine suitability of the product for his own intended use, application and job situation and user assumes all risk and liability resulting from his use of the product. We do not suggest or guarantee that any product limitations are the only ones which may exist. Neither Seller nor Manufacturer shall be liable to the buyer or any third person for any injury, loss or damage directly or indirectly resulting from use of, or inability to use, the products. Recommendations or statements, whether in writing or oral, other than those contained herein shall not be binding upon the Manufacturer, unless in writing and signed by an authorized corporate officer of Manufacturer. Technical and application information is provided for the purpose of establishing a general profile of the material and proper application procedures. Test performance results were obtained in a controlled environment and Manufacturer makes no claim that these tests or any other tests accurately represent all environments. Manufacturer is not responsible for typographical errors.



Scan QR code for full Disclaimer and Limited Warranty information